

Klausies, spulgacīt

E. Zeibota vārdi

Hör', Blitzaugelein

Aus dem Lettischen von K. Hunnius

Listen, Bright-Eyes

Jāzeps Vītols

Allegretto

mf

mf

rit.

p leggiero

Klau - sies, spulga - cīt,
Hör', Blitz - äu - ge - lein,

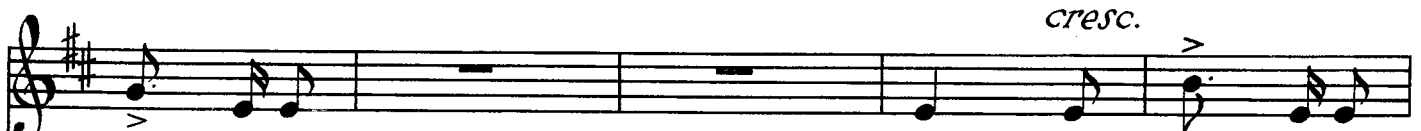
ma - - zā zel - tai - nīt, kā - du mei - ti - ņu es, lūk,
o du Goldchen mein, ken - ne weit und breit sü - - sser



pa-zis-tu: au -- gu -- miņš tai stalts,
 kei-ne Maid mit dem Wuchs so schlank,



vai -- dziņš sār -- ti balts, ro -- žu
 ros' -- gen Wäng -- lein blank, Pur -- pur --



lū -- piņas, zi -- las ač -- tiņas.
 lip -- penreiņ'n, blau -- en Āu -- gelein.



mf *cresc.* *f*

dim.

mf *p*

Skais — — to gal — vi — nu, cē — — li pa — cel — tu,
 Um ihr Köpf-chen schön, rei — — — zend an — zu — sehn,

ma — tu spro — dziņas puš — — ko zel — to — tas,
 wallt im gold — nen Glanz hol — — — der Lo — cken Kranz,

f
 skūp — — sta pie — — ri — — ti
 strei — chelt's Stir — — — ne — — lein

mf

un ap mu — — ti — — ti
 und um's Münd — — chen klein

mf

mi — — li lak — — stojas,
zuckt's voll Sehn-sucht hin,

p *mf*

cresc.

sküp — stit il — — gojas.
Küs — — se schon im Sinn.

mp *mf* *cresc.*

f

mf

Rei — — — — — zēm do — bulits,
 Wan — — — — — ge zeigt geschwind

dim. *mp*

Mil — — — — — das mī — lulits,
 Mil — — — — — das Lieb-lingskind,

dim.

meno

rā — — dās vai — — dzi — nā
 schel — misch und voll List,

*rit.**a tempo*

lie -- lā škel -- mi -- bā.
was ein Grüb -- chen ist.

dim. *mf*

mf *f*

Tad tai ac -- -- -- ti -- nās
Ihr in's Äu -- -- -- ge -- lein

f

f

skats man grem -- -- -- dē -- jas, iz tām
taucht mein Blick hin -- ein, draus wie

pre — — — — — tim mirdz vi — — nas dai — — —
Son — — — — — nen — schein strahlt ein Herz,

The first system consists of a vocal line on a treble clef staff and a piano accompaniment on a grand staff (treble and bass clefs). The key signature is two sharps (F# and C#). The vocal line begins with a long note on 'pre' followed by a melodic phrase. The piano accompaniment provides harmonic support with chords and moving lines.

cresc.

— — lā, dai — — — — — lā sirds.
ein Herz so so rein.

The second system continues the piece with a *cresc.* (crescendo) marking. The vocal line has a long note on 'lā' followed by 'dai' and another long note on 'lā'. The piano accompaniment features a *f* (forte) dynamic marking and includes a melodic line in the right hand and a bass line in the left hand.

a tempo

The third system begins with an *a tempo* marking. The vocal line is mostly silent, indicated by a slash and a vertical line. The piano accompaniment features a *mf* (mezzo-forte) dynamic marking and includes a melodic line in the right hand and a bass line in the left hand.

rit.

mf *meno mosso* *rit.* *meno*

Sa — — ki, spulga — cit, ma — — zā zel — tai — nit,
 Sag', Blitz — ä — u — ge — lein, o du Goldchen mein,

p *pp*

rit. *a tempo*

teic, jel mī — — lä —
 dies Ge — sicht — chen

crescendo

kā,
fein: vai ne — e — — si tā?
Lieb', du wirst es sein?

Vai Lieb', ne — — —
du

e — — — si tā?
wirst es sein?

f *sf*